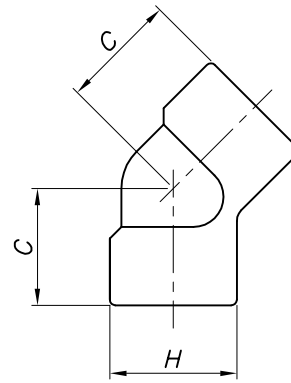
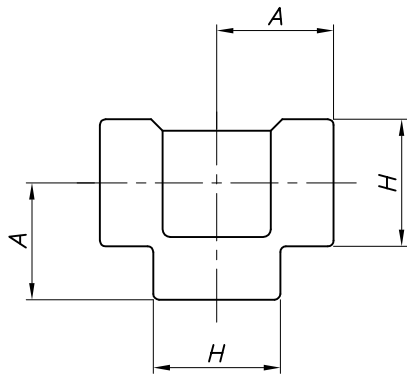


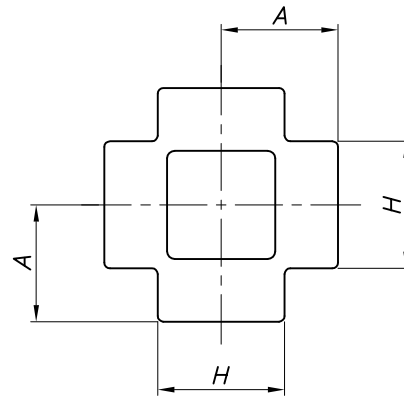
COTOVELO 90°



COTOVELO 45°



TEE



CRUZETA

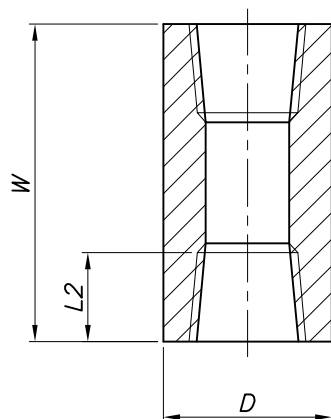
Ø NOM. POL. (INCH)	A			C			H			G			L2	
	2000	3000	Toler. *	2000	3000	Toler. *	2000	3000	Toler. *	2000	3000	Toler. *	Min	Toler. *
1/8	21.0	21.0	±0.6	17.0	17.0	±0.6	22.0	22.0	±0.6	3.18	3.18	-0.2/+0.4	6.7	-0/+1
1/4	21.0	25.0	±0.6	17.0	19.0	±0.6	22.0	25.0	±0.6	3.18	3.30	-0.2/+0.4	10.2	-0/+1
3/8	25.0	28.0	±0.6	19.0	22.0	±0.6	25.0	33.0	±0.6	3.18	3.51	-0.2/+0.4	10.4	-0/+1
1/2	28.0	33.0	±0.6	22.0	25.0	±0.6	33.0	38.0	±0.6	3.18	4.09	-0.2/+0.4	13.6	-0/+1
3/4	33.0	38.0	±0.6	25.0	28.0	±0.6	38.0	46.0	±0.6	3.18	4.32	-0.2/+0.4	13.9	-0/+1
1	38.0	44.0	±0.6	28.0	33.0	±0.6	46.0	56.0	±1.0	3.68	4.98	-0.2/+0.4	17.3	-0/+1
1.1/4	44.0	51.0	±0.6	33.0	35.0	±0.6	56.0	62.0	±1.0	3.89	5.28	-0.2/+0.4	18.0	-0/+1
1.1/2	51.0	60.0	±0.6	35.0	43.0	±0.6	62.0	75.0	±1.0	4.01	5.56	-0.2/+0.4	18.4	-0/+1
2	60.0	64.0	±1.2	43.0	44.0	±1.2	75.0	84.0	±1.0	4.27	7.14	-0.2/+0.6	19.2	-0/+1
2.1/2	76.0	83.0	±1.2	52.0	52.0	±1.2	92.0	102.0	±1.2	5.61	7.65	-0.2/+0.6	28.9	-0/+1
3	86.0	95.0	±1.2	64.0	64.0	±1.2	109.0	121.0	±1.2	5.99	8.84	-0.2/+0.6	30.5	-0/+1
4	106.0	114.0	±1.2	79.0	79.0	±1.2	146.0	152.0	±1.2	6.55	11.18	-0.2/+0.6	33.0	-0/+1

* - TOLERÂNCIAS ADOTADAS COMO PADRÃO QG, PERMITIDAS CONFORME ASME B16.11 PARÁGRAFO 6.1

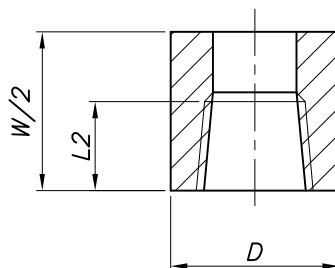


QG IND. E COM. DE ACESSÓRIOS INDUSTRIAIS LTDA.

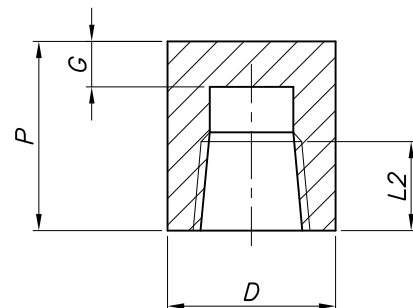
TÍTULO:		CONEXÕES FORJADAS ROSCADAS 3000#			CÓDIGO:	FOLHA:	REV.:
					IT-009	01	03
MATERIAL:				NORMA:			
AÇO INOX F304/L, F316/L AÇO CARBONO F11, F22, F91				A182 - ASME B16.11			
ESCALA:	DATA:	DESENHISTA:	VERIFICAÇÃO:	APROVAÇÃO:			
S/ESCALA	29/07/19	SILVANA	SIDNEY	IVO			



LUVA



MEIA-LUVA



CAP

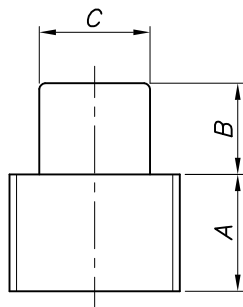
Ø NOM. POL. (INCH)	W		W/2		P		D		G		L2	
	Nominal	Tol.(±) *	Nominal	Tol.(±) *	Nominal	Tol.(±) *	Nominal	Tol.(±) *	Nominal	Max	Min	Max
1/8	32.0	±0.4	16.0	±0.4	19.0	±0.4	16.0	±0.2	4.8	5,2	6,7	7,7
1/4	35.0	±0.4	17.5	±0.4	25.0	±0.4	19.0	±0.2	4.8	5,2	10,2	11,2
3/8	38.0	±0.4	19.0	±0.4	25.0	±0.4	22.0	±0.2	4.8	5,2	10,4	11,4
1/2	48.0	±0.4	24.0	±0.4	32.0	±0.4	28.0	±0.2	6.4	6,8	13,6	14,6
3/4	51.0	±0.4	25.5	±0.4	37.0	±0.4	35.0	±0.2	6.4	6,8	13,9	14,9
1	60.0	±0.4	30.0	±0.4	41.0	±0.4	44.0	±0.2	9.7	10,1	17,3	18,3
1.1/4	67.0	±0.8	33.5	±0.4	44.0	±0.4	57.0	±0.2	9.7	10,1	18.0	19,0
1.1/2	79.0	±0.8	39.5	±0.4	44.0	±0.4	64.0	±0.2	11.2	11,6	18,4	19,4
2	86.0	±0.8	43.0	±0.4	48.0	±0.4	76.0	±0.4	12.7	13,1	19,2	20,2
2.1/2	92.0	±0.8	46.0	±0.4	60.0	±0.4	92.0	±0.4	15.7	16,1	28,9	29,9
3	108.0	±0.8	54.0	±0.4	65.0	±0.4	108.0	±0.4	19.0	19,4	30,5	31,5
4	121.0	±0.8	60.5	±0.4	68.0	±0.4	140.0	±0.4	22.4	22,8	33,0	34,0

* - TOLERÂNCIAS ADOTADAS COMO PADRÃO QG, PERMITIDAS CONFORME ASME B16.11 PARÁGRAFO 6.1

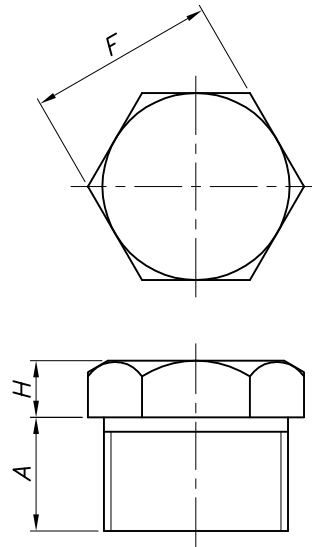


QG IND. E COM. DE ACESSÓRIOS INDUSTRIAIS LTDA.

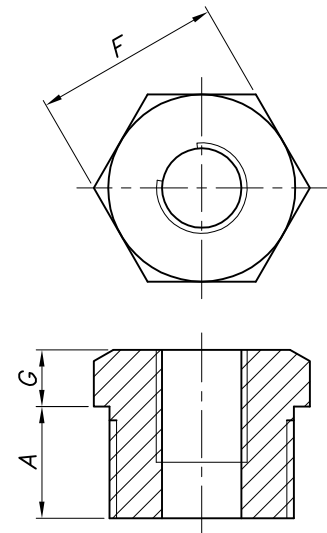
TÍTULO:		CONEXÕES ROSCADAS 3000#		CÓDIGO:	IT-009	FOLHA:	02	REV.:	03
MATERIAL:				AÇO INOX F304/L, F316/L AÇO CARBONO F11, F22, F91		NORMA:			
				A182 - ASME B16.11					
ESCALA:		DATA:		DESENHISTA:		VERIFICAÇÃO:		APROVAÇÃO:	
S/ESCALA		29/07/19		SILVANA		SIDNEY		IVO	



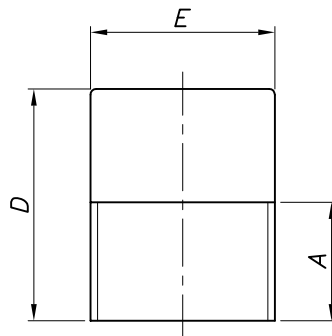
PLUG QUADRADO



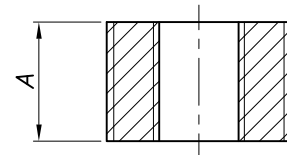
PLUG SEXTAVADO



BUCHA SEXTAVADA



PLUG REDONDO

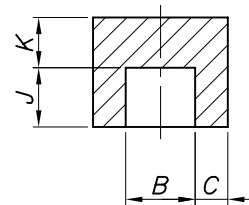
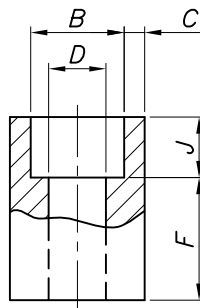
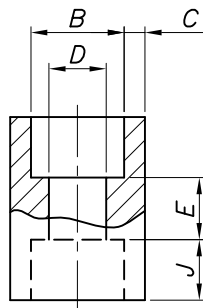
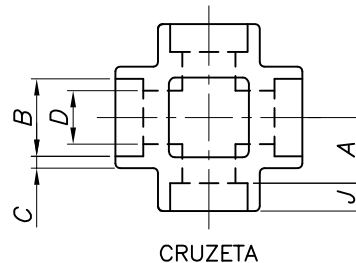
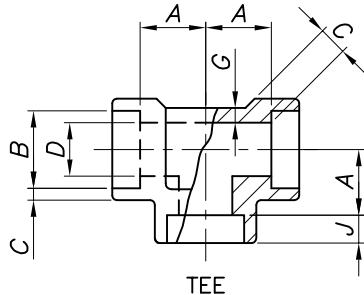
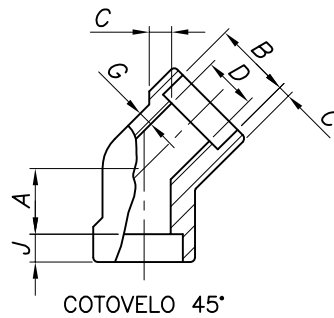
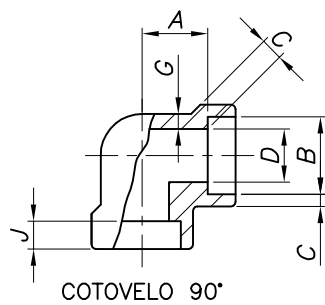


BUCHA

Ø NOM. POL. (INCH)	A		PLUG QUADRADO				PLUG REDONDO				PLUG SEXTAVADO / BUCHA				
			B		C		E		D		F		G	H	
	Nom.	Max. *	Min.	Max. *	Min.	Max. *	Min.	Toler. *	Min.	Max. *	Min.	Toler. *	Min.	Min.	Max. *
1/8	10.0	11.0	6.0	7.2	7.15	8.0	10.0	±0.2	35.0	35.8	11.11	±0.2	3.0 *	6.0	6.4
1/4	11.0	12.0	6.0	7.2	9.55	10.8	14.0	±0.2	41.0	41.8	15.88	±0.2	3.0	6.0	6.4
3/8	13.0	14.0	8.0	8.8	11.11	11.9	18.0	±0.2	41.0	41.8	17.46	±0.2	4.0	8.0	8.4
1/2	14.0	16.0	10.0	10.8	14.29	15.1	21.0	±0.2	44.0	44.8	22.23	±0.2	5.0	8.0	8.4
3/4	16.0	17.0	11.0	15.1	15.88	16.8	27.0	±0.2	44.0	44.8	26.99	±0.2	6.0	10.0	10.4
1	19.0	20.0	13.0	16.7	20.64	21.8	33.0	±0.2	51.0	52.2	34.93	±0.2	6.0	10.0	10.4
1.1/4	21.0	22.0	14.0	18.3	23.81	24.8	43.0	±0.4	51.0	52.2	44.45	±0.4	7.0	14.0	14.4
1.1/2	21.0	23.0	16.0	20.6	28.58	29.8	48.0	±0.4	51.0	52.2	50.80	±0.4	8.0	16.0	16.4
2	22.0	25.0	18.0	22.2	33.27	34.5	60.0	±0.4	64.0	65.2	63.50	±0.4	9.0	18.0	18.4
2.1/2	27.0	32.0	19.0	24.6	38.10	39.3	73.0	±0.4	70.0	71.2	76.20	±0.4	10.0	19.0	19.4
3	28.0	35.0	21.0	26.2	42.86	44.1	89.0	±0.4	70.0	71.2	88.90	±0.4	10.0	21.0	21.4
4	32.0	42.0	25.0	32.6	63.50	66.2	114.0	±0.4	76.0	77.2	117.48	±0.4	13.0	25.0	25.4

* - TOLERÂNCIAS ADOTADAS COMO PADRÃO QG, PERMITIDAS CONFORME ASME B16.11 PARÁGRAFO 6.1

	QG IND. E COM. DE ACESSÓRIOS INDUSTRIAIS LTDA.						
	TÍTULO: PLUGS E BUCHAS 3000#				CÓDIGO: IT-009	FOLHA: 03	REV.: 03
	MATERIAL: AÇO INOX F304/L, F316/L AÇO CARBONO F11, F22, F91			NORMA: A182 - ASME B16.11			
	ESCALA: S/ESCALA	DATA: 29/07/19	DESENHISTA: SILVANA	VERIFICAÇÃO: SIDNEY	APROVAÇÃO: IVO		



LUVA

MEIA-LUVA

CAP

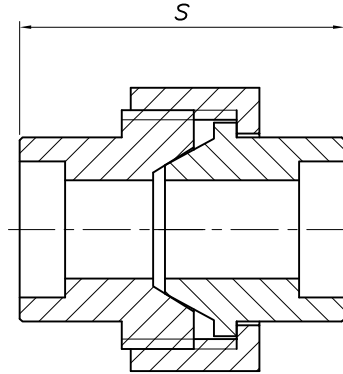
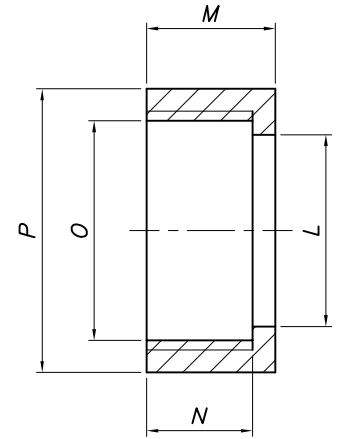
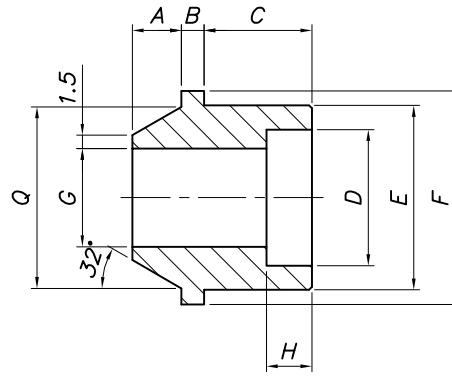
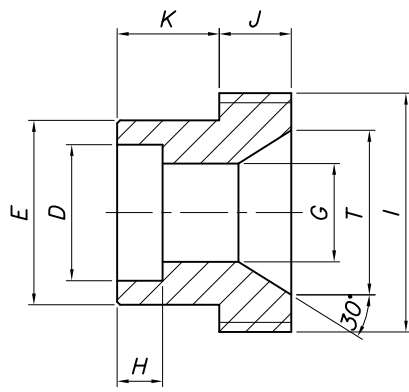
Ø NOM. POL. (INCH)	B		D		C		G		J		A			E		F		K	
	Min.	Max.	Min.	Max.	Min.	Max. *	Min.	Max. *	Min.	Max. *	Cotov. 45°	Outros	Toler. +/-	Med.	Toler. +/-	Med.	Toler. +/-	Min.	Max. *
1/8	10.8	11.2	6.1	7.6	3.18	3.70	2.41	3.20	9.5	10.0	8.0	11.0	1.0	6.5	1.5	16.0	1.5	4.8	5.2
1/4	14.2	14.6	8.5	10.0	3.30	4.00	3.02	3.80	9.5	10.0	8.0	11.0	1.0	6.5	1.5	16.0	1.5	4.8	5.2
3/8	17.6	18.0	11.8	13.3	3.50	4.50	3.20	4.00	9.5	10.0	8.0	13.5	1.5	6.5	3.0	17.5	3.0	4.8	5.2
1/2	21.8	22.2	15.0	16.6	4.09	5.30	3.73	4.60	9.5	10.0	11.0	15.5	1.5	9.5	3.0	22.5	3.0	6.4	6.8
3/4	27.2	27.6	20.2	21.7	4.27	5.50	3.91	4.80	12.5	13.0	13.0	19.0	1.5	9.5	3.0	24.0	3.0	6.4	6.8
1	33.9	34.3	25.9	27.4	4.98	6.40	4.55	5.40	12.5	13.0	14.0	22.5	2.0	12.5	4.0	28.5	4.0	9.6	10.0
1.1/4	42.7	43.1	34.3	35.8	5.28	6.90	4.85	5.70	12.5	13.0	17.5	27.0	2.0	12.5	4.0	30.0	4.0	9.6	10.0
1.1/2	48.8	49.2	40.1	41.6	5.54	7.20	5.08	5.90	12.5	13.0	20.5	32.0	2.0	12.5	4.0	32.0	4.0	11.2	11.6
2	61.2	61.7	51.7	53.3	6.04	7.80	5.54	6.50	16.0	16.5	25.5	38.0	2.0	19.0	4.0	41.0	4.0	12.7	13.1
2.1/2	73.9	74.4	61.2	64.2	7.67	9.90	7.01	8.00	16.0	16.5	28.5	41.0	2.5	19.0	5.0	43.0	5.0	15.7	16.1
3	89.8	90.3	76.4	79.4	8.30	10.70	7.62	8.50	16.0	16.5	32.0	57.0	2.5	19.0	5.0	44.5	5.0	19.0	19.4
4	115.2	115.7	100.7	103.8	9.35	12.10	8.56	9.50	19.0	19.5	41.0	66.5	2.5	19.0	5.0	48.0	5.0	22.4	22.8

* - TOLERÂNCIAS ADOTADAS COMO PADRÃO QG, PERMITIDAS CONFORME ASME B16.11 PARÁGRAFO 6.1



QG IND. E COM. DE ACESSÓRIOS INDUSTRIAIS LTDA.

TÍTULO: CONEXÕES FORJADAS SOCKETWELDING 3000#		CÓDIGO: IT-009	FOLHA: 04	REV.: 04
MATERIAL: AÇO INOX F304/L, F316/L AÇO CARBONO F11, F22, F91		NORMA: A182 - ASME B16.11		
ESCALA: S/ESCALA	DATA: 29/07/19	DESENHISTA: SILVANA	VERIFICAÇÃO: SIDNEY	APROVAÇÃO: IVO

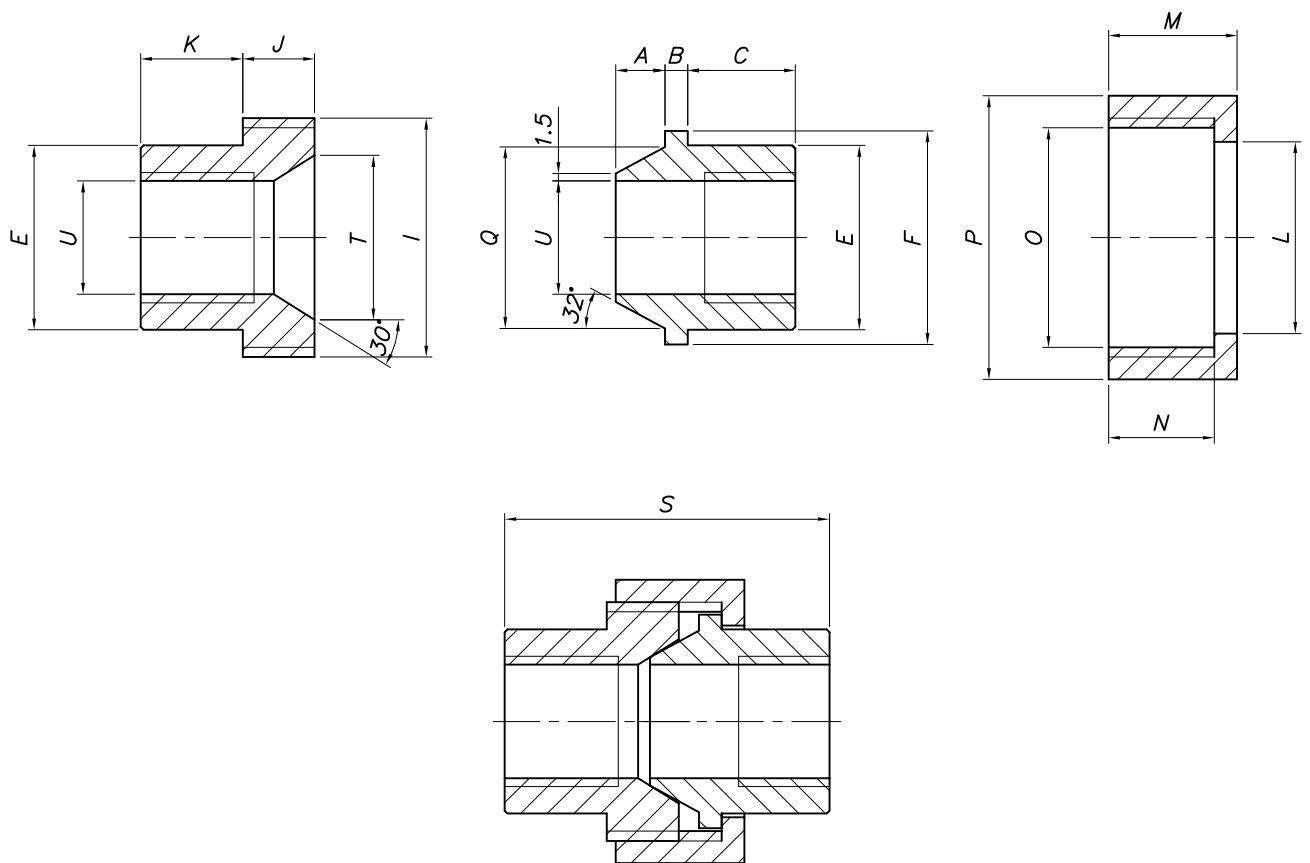


Ø NOMINAL POL. (INCH)	1/4	3/8	1/2	3/4	1	1.1/4	1.1/2	2	2.1/2	3	TOLER.	
mm	A	5.0	5.0	7.0	7.0	7.0	7.0	8.0	9.0	13.0	16.0	±0.4
	B	4.0	4.0	4.0	4.0	4.0	5.0	5.0	6.0	6.0	8.0	±0.4
	C	17.0	17.0	20.0	21.0	24.0	28.0	30.0	34.0	38.0	43.0	±0.4
	D	14.3	17.6	21.8	27.2	33.9	42.8	48.7	61.2	74.0	90.0	±0.2
	E	21.0	25.0	31.0	36.0	44.5	55.0	62.0	76.0	89.0	108.0	±0.2
	F	25.4	28.5	34.9	40.0	50.8	63.5	69.8	85.5	95.0	120.0	±0.2
	G	9.0	12.0	15.8	20.5	26.5	34.0	41.0	52.5	63.0	78.0	±0.2
	H	9.7	9.7	9.7	12.7	12.7	12.7	12.7	15.8	15.8	15.8	±0.4
	I	28.0	31.0	38.0	43.0	53.8	66.5	73.0	88.5	98.5	123.0	±0.1
	J	10.0	10.0	11.0	11.0	11.0	11.0	13.0	15.0	17.0	22.0	±0.4
	K	14.0	14.0	17.0	18.0	21.0	25.0	28.0	31.0	36.0	41.0	±0.4
	L	21.5	25.5	31.5	36.5	45.0	55.5	62.5	76.5	89.5	108.5	±0.2
	M	20.0	20.0	21.0	22.0	24.0	25.0	26.0	29.0	32.0	40.0	±0.4
	N	16.0	16.0	17.0	18.0	18.0	19.0	20.0	23.0	26.0	34.0	±0.4
	O	26.0	29.0	35.5	40.5	51.3	64.0	70.5	86.0	95.8	120.3	±0.1
	P	34.9	41.2	47.6	50.8	64.0	80.0	92.0	105.0	117.0	145.0	±0.2
	Q	18.2	21.2	27.5	32.2	38.2	45.7	54.0	66.7	82.2	101.0	±0.2
	S	47.0	47.0	54.0	57.0	63.5	71.5	79.5	89.0	100.0	118.0	±0.4
	T	15.7	18.7	25.0	28.5	33.9	42.6	49.6	63.0	78.5	96.0	±0.2



QG IND. E COM. DE ACESSÓRIOS INDUSTRIAIS LTDA.

TÍTULO:	UNIÃO SOCKET WELDING – 3000 LBS	CÓDIGO:	IT-009	FOLHA:	07	REV.:	03		
MATERIAL:	AÇO INOX F304/L, F316/L AÇO CARBONO F11, F22, F91	NORMA:	A182 – PADRÃO QG						
ESCALA:	S/ ESCALA	DATA:	29/07/19	DESENHISTA:	SILVANA	VERIFICAÇÃO:	SIDNEY	APROVAÇÃO:	IVO

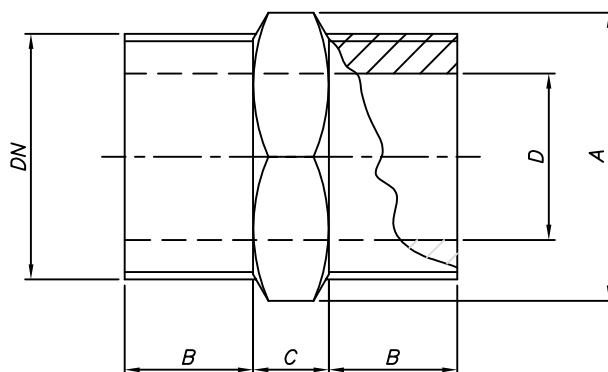


Ø NOMINAL POL. (INCH)	1/4	3/8	1/2	3/4	1	1.1/4	1.1/2	2	2.1/2	3	TOLER.	
mm	A	5.0	5.0	7.0	7.0	7.0	7.0	8.0	9.0	13.0	16.0	±0.4
	B	4.0	4.0	4.0	4.0	4.0	5.0	5.0	6.0	6.0	8.0	±0.4
	C	17.0	17.0	20.0	21.0	24.0	28.0	30.0	34.0	38.0	43.0	±0.4
	E	21.0	25.0	31.0	36.0	44.5	55.0	62.0	76.0	89.0	108.0	±0.2
	F	25.4	28.5	34.9	40.0	50.8	63.5	69.8	85.5	95.0	120.0	±0.2
	I	28.5	31.0	38.1	43.0	53.8	66.5	73.0	88.5	98.5	123.0	±0.1
	J	10.0	10.0	11.0	11.0	11.0	11.0	13.0	15.0	17.0	22.0	±0.4
	K	14.0	14.0	17.0	18.0	21.0	25.0	28.0	31.0	36.0	41.0	±0.4
	L	21.5	25.5	31.5	36.5	45.0	55.5	62.5	76.5	89.5	108.5	±0.2
	M	20.0	20.0	21.0	22.0	24.0	25.0	26.0	29.0	32.0	40.0	±0.4
	N	16.0	16.0	17.0	18.0	18.0	19.0	20.0	23.0	26.0	34.0	±0.4
	O	26.0	29.0	35.5	40.5	51.3	64.0	70.5	86.0	95.8	120.3	±0.1
	P	34.9	41.2	47.6	50.8	64.0	80.0	92.0	105.0	117.0	145.0	±0.2
	Q	20.2	23.7	29.7	34.7	40.7	49.7	57.0	70.2	86.2	106.0	±0.2
	S	47.0	47.0	54.0	57.0	63.5	71.5	79.5	89.0	100.0	118.0	±0.4
	T	17.7	21.2	27.2	31.0	36.4	46.6	52.6	66.5	82.5	101.0	±0.2
	U	11.0	14.5	18.0	23.0	29.0	38.0	44.0	56.0	67.0	83.0	±0.1



QG IND. E COM. DE ACESSÓRIOS INDUSTRIAIS LTDA.

TÍTULO:		UNIÃO COM ROSCA – 3000 LBS			CÓDIGO:	FOLHA:	REV.:
					IT-009	08	03
MATERIAL:				NORMA:			
AÇO INOX F304/L, F316/L AÇO CARBONO F11, F22, F91				A182 – PADRÃO QG			
ESCALA:	DATA:	DESENHISTA:	VERIFICAÇÃO:	APROVAÇÃO:			
S/ ESCALA	29/07/19	SILVANA	SIDNEY	IVO			



NIPLE SEXTAVADO

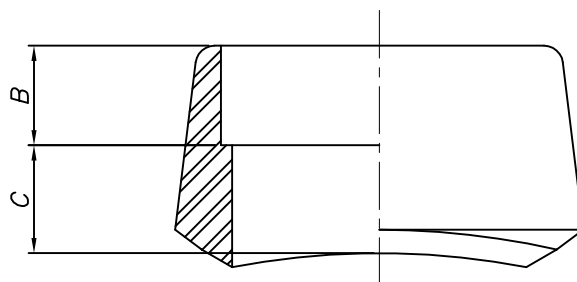
Ø NOMINAL POL. (INCH)	1/8	1/4	3/8	1/2	3/4	1	1.1/4 (*)	1.1/2	2	2.1/2 (*)	3 (*)	4 (*)	
mm	A	11	15	18	22	27	35	44,5	50	62	76,2	92,0	117,0
	B	10	15	16	20	21	25	21,0	26	27	30,0	34,0	40,0
	C	6	6	8	8	10	10	10,0	16	17	15,0	15,0	15,0
	D	5	8	11	14	19	24	29,0	38	49	63,0	67,0	90,0

(*) - Padrão QG



QG IND. E COM. DE ACESSÓRIOS INDUSTRIAIS LTDA.

TÍTULO:	NIPLE SEXTAVADO – 3000 LIBRAS			CÓDIGO:	IT-009	FOLHA:	09	REV.:	04
MATERIAL:	AÇO INOX F304/L, F316/L AÇO CARBONO F11, F22, F91			NORMA:	A105 / A182 / BS3799 / PADRÃO QG				
ESCALA:	S/ ESCALA	DATA:	01/03/24	DESENHISTA:	SILVANA	VERIFICAÇÃO:	SIDNEY	APROVAÇÃO:	IVO



Dimensões em mm

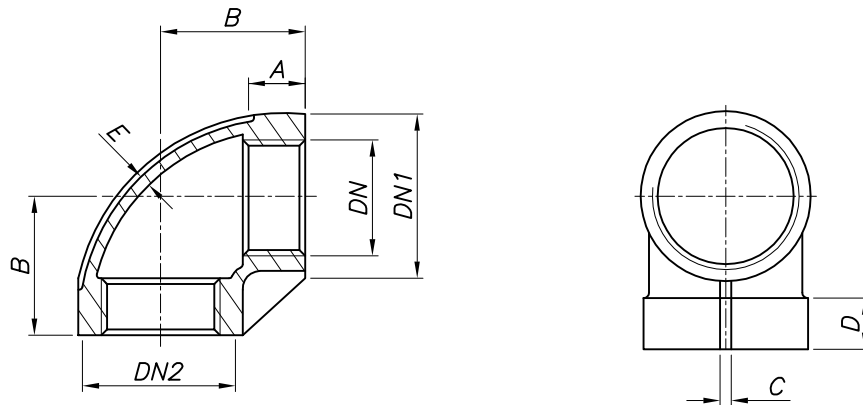
Ø EXT DN. (MM)	Ø NOM. POL. (INCH)	B Min. (a)	Medida "C"	
			Classe 3000	Classe 6000
6	1/8	9,7	10,4	–
8	1/4	9,7	10,4	–
10	3/8	9,7	12,7	–
15	1/2	9,7	15,7	23,9
20	3/4	12,7	15,7	25,4
25	1	12,7	22,4	28,7
32	1.1/4	12,7	22,4	30,2
40	1.1/2	12,7	23,9	31,8
50	2	15,7	23,9	36,6
65	2.1/2	15,7	25,4	–
80	3	15,7	30,2	–
100	4	19,1	30,2	–

(a): Medida "B", encaixe mínimo conforme ASME B16.11



QG IND. E COM. DE ACESSÓRIOS INDUSTRIAIS LTDA.

TÍTULO: COLAR RETO SOCKETWELDING 3000# / 6000#		CÓDIGO: IT-009	FOLHA: 14	REV.: 02
MATERIAL: Grau WPB, 304/L, 316/L		NORMA: ASTM A105, A182/MSS SP-97		
ESCALA: S/ESCALA	DATA: 06/04/18	DESENHISTA: SILVANA	VERIFICAÇÃO: SIDNEY	APROVAÇÃO: IVO



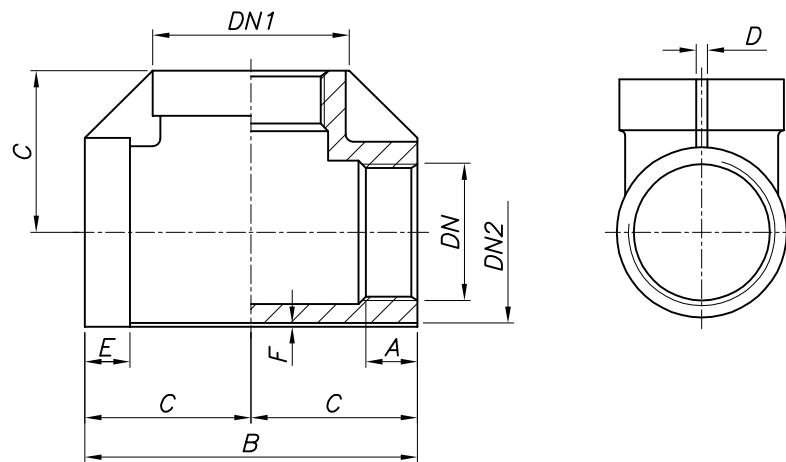
DIÂMETRO NOM. POL. (INCH)	DN	DN1	DN2	A	B	C	D	E
1/8	1/8	16,0	13,5	6,1	17,0	3,6	6,1	2,0
1/4	1/4	19,1	15,5	9,4	19,6	4,1	6,1	2,0
3/8	3/8	22,6	19,6	9,7	23,9	4,1	7,9	2,5
1/2	1/2	27,9	25,9	9,9	29,0	3,0	7,6	2,0
3/4	3/4	34,0	31,5	10,4	32,0	3,0	8,9	2,0
1	1	42,9	40,9	14,0	37,1	4,1	9,9	2,5
1.1/4	1.1/4	51,1	48,0	16,0	43,4	5,1	10,9	2,5
1.1/2	1.1/2	58,9	56,4	15,5	48,0	5,1	11,9	2,5
2	2	71,9	68,1	18,0	55,6	5,6	13,0	2,5
2.1/2	2.1/2	89,9	86,1	22,1	67,0	8,9	14,0	3,0
3	3	105,9	102,1	23,9	77,0	9,9	15,0	3,6
4	4	132,1	127,0	25,9	96,0	8,4	16,5	3,6

OBS: DIMENSÕES CONFORME PADRÃO QG




QG IND. E COM. DE ACESSÓRIOS INDUSTRIAIS LTDA.

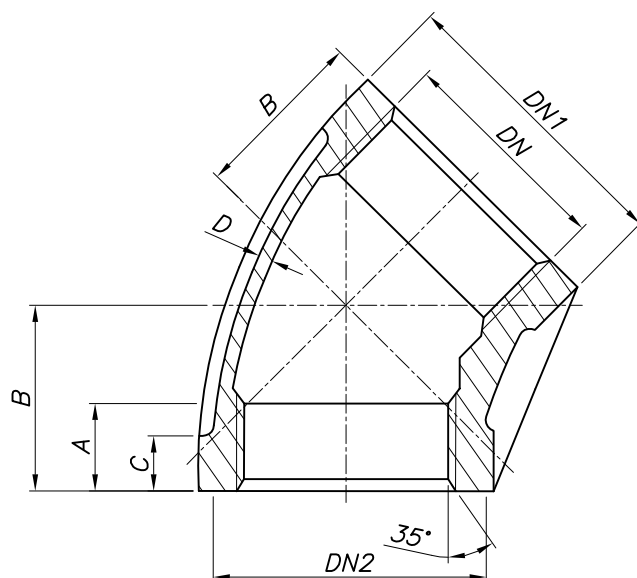
TÍTULO:		COTOVELO 90° 150#		CÓDIGO:	FOLHA:	REV.:
				IT-010	01	03
MATERIAL:			NORMA:			
AÇO INOX TP 304 (CF8), 316 (CF8M)			A351			
ESCALA:	DATA:	DESENHISTA:	VERIFICAÇÃO:	APROVAÇÃO:		
S/ESCALA	07/06/18	SILVANA	SIDNEY	IVO		



DIÂMETRO NOM. POL. (INCH)	DN	DN1	DN2	A	B	C	D	E	F
1/8	1/8	16,0	13,5	6,1	36,1	18,0	3,0	6,1	2,5
1/4	1/4	19,1	15,5	9,4	26,4	19,6	3,0	6,1	2,0
3/8	3/8	22,6	19,6	9,7	47,0	23,6	3,0	6,6	2,5
1/2	1/2	27,9	25,9	9,9	57,9	29,0	3,0	7,6	2,0
3/4	3/4	34,0	31,5	9,9	65,0	32,5	3,0	8,4	2,0
1	1	42,9	39,9	13,0	73,9	37,1	4,1	9,4	2,0
1.1/4	1.1/4	51,1	48,0	16,5	88,9	44,5	5,1	10,4	2,0
1.1/2	1.1/2	58,9	56,4	16,0	97,0	48,5	5,1	11,4	2,5
2	2	71,9	68,1	18,0	113,0	56,4	6,1	11,9	2,5
2.1/2	2.1/2	89,9	86,1	23,1	135,9	68,1	8,9	14,5	4,1
3	3	105,9	102,1	24,4	157,0	78,5	9,9	15,0	4,1
4	4	132,1	127,0	25,9	195,1	97,5	8,9	15,5	4,1

OBS: DIMENSÕES CONFORME PADRÃO QG

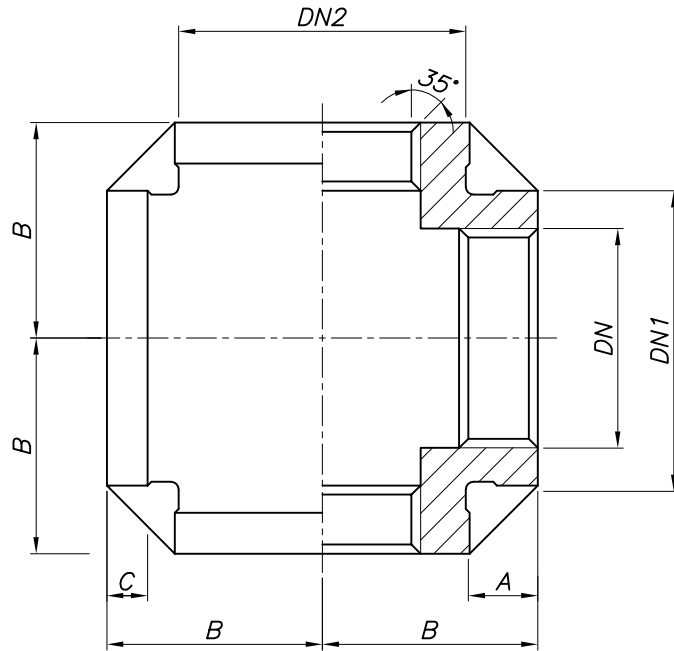
	QG IND. E COM. DE ACESSÓRIOS INDUSTRIAIS LTDA.								
	TÍTULO:	TEE RETO 90° 150#	CÓDIGO:	IT-010	FOLHA:	02	REV.:	03	
	MATERIAL:	AÇO INOX TP 304 (CF8), 316 (CF8M)	NORMA:	A351					
	ESCALA:	S/ESCALA	DATA:	07/06/18	DESENHISTA:	SILVANA	VERIFICAÇÃO:	SIDNEY	APROVAÇÃO:



DIÂMETRO NOM. POL. (INCH)	DN	DN1	DN2	A	B	C	D
1/8	1/8	16,0	13,5	7,1	16,0	6,1	2,0
1/4	1/4	19,1	15,5	9,4	17,0	6,6	2,0
3/8	3/8	22,6	19,6	9,7	19,1	6,1	2,0
1/2	1/2	30,0	27,9	9,9	21,1	7,9	2,5
3/4	3/4	36,1	34,0	10,9	23,9	9,9	2,5
1	1	45,0	39,9	14,0	27,9	9,9	2,5
1.1/4	1.1/4	56,4	48,5	15,5	33,0	10,9	2,5
1.1/2	1.1/2	58,9	55,9	15,5	36,1	12,4	2,5
2	2	71,9	68,1	16,5	41,9	13,0	2,5
2.1/2	2.1/2	89,9	87,1	22,1	49,0	14,0	4,1
3	3	105,9	101,6	24,9	54,1	15,0	4,1
4	4	158,5	108,0	24,9	65,0	15,0	4,1

OBS: DIMENSÕES CONFORME PADRÃO QG

	QG IND. E COM. DE ACESSÓRIOS INDUSTRIAIS LTDA.								
	TÍTULO:	COTOVELO 45° 150#	CÓDIGO:	IT-010	FOLHA:	03	REV.:	03	
	MATERIAL:	AÇO INOX TP 304 (CF8), 316 (CF8M)		NORMA:	A351				
	ESCALA:	S/ESCALA	DATA:	07/06/18	DESENHISTA:	SILVANA	VERIFICAÇÃO:	SIDNEY	APROVAÇÃO:



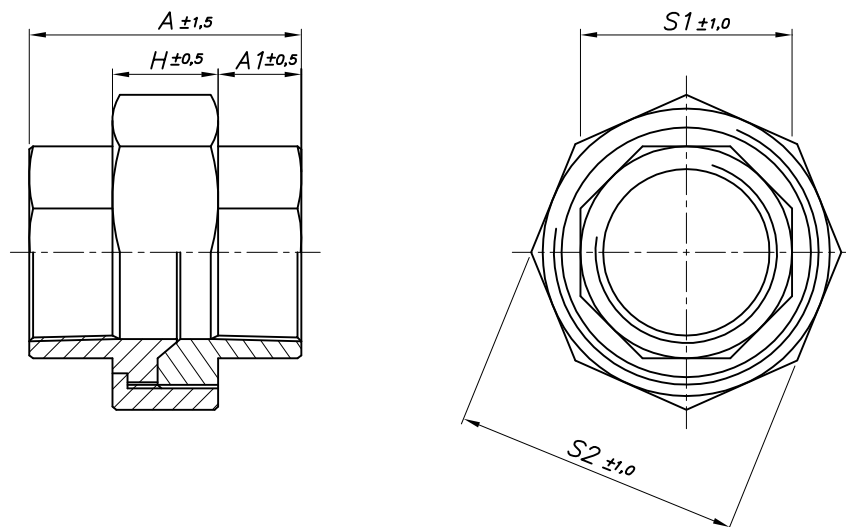
DIÂMETRO NOM. POL. (INCH)	DN	DN1	DN2	A	B	C
1/8	1/8	16,0	14,0	6,1	17,5	6,1
1/4	1/4	20,1	18,0	9,4	19,1	7,1
3/8	3/8	24,9	23,1	9,7	23,1	7,1
1/2	1/2	30,0	27,9	9,9	29,0	7,1
3/4	3/4	36,1	34,0	10,9	32,5	8,9
1	1	45,0	41,9	14,0	37,6	9,9
1.1/4	1.1/4	53,1	50,0	18,0	43,9	10,9
1.1/2	1.1/2	59,9	55,9	18,0	48,0	11,9
2	2	72,9	70,1	18,0	58,9	13,0
2.1/2	2.1/2"	89,9	86,1	22,1	68,1	14,0
3	3	105,9	102,1	24,9	78,0	15,0
4	4	132,1	128,0	25,9	97,0	16,0

OBS: DIMENSÕES CONFORME PADRÃO QG



QG IND. E COM. DE ACESSÓRIOS INDUSTRIAIS LTDA.

TÍTULO: CRUZETA 150#		CÓDIGO: IT-010	FOLHA: 04	REV.: 03
MATERIAL: AÇO INOX TP 304 (CF8), 316 (CF8M)		NORMA: A351		
ESCALA: S/ESCALA	DATA: 07/06/18	DESENHISTA: SILVANA	VERIFICAÇÃO: SIDNEY	APROVAÇÃO: IVO



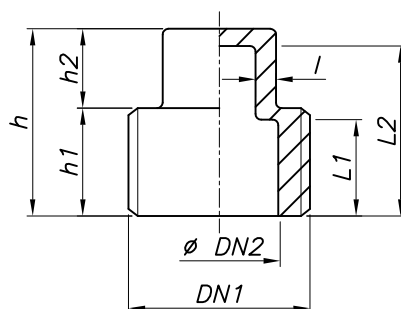
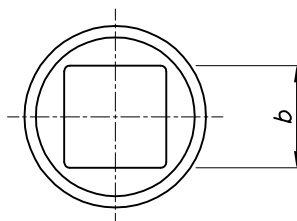
DIÂMETRO NOM. POL. (INCH)	A	A1	H	S1	S2
1/8	37,1	11,9	15,0	18,0	29,0
1/4	37,1	11,9	15,0	18,0	29,0
3/8	39,1	11,9	16,0	23,1	36,1
1/2	40,9	13,0	15,0	26,9	40,9
3/4	41,9	16,0	16,0	32,0	49,0
1	51,1	17,0	18,0	25,7	57,9
1.1/4	52,1	16,0	21,1	50,0	68,1
1.1/2	55,9	18,0	22,1	55,9	77,0
2	59,9	18,0	24,9	69,1	91,9
2.1/2	74,9	25,9	24,9	85,1	109,0
3	88,9	30,0	29,0	99,1	125,0
4	99,1	32,0	34,0	125,0	156,0

OBS: DIMENSÕES CONFORME PADRÃO QG



QG IND. E COM. DE ACESSÓRIOS INDUSTRIAIS LTDA.

TÍTULO: UNIAO FF 150#		CÓDIGO: IT-010	FOLHA: 05	REV.: 03
MATERIAL: AÇO INOX TP 304 (CF8), 316 (CF8M)		NORMA: A351		
ESCALA: S/ESCALA	DATA: 07/06/18	DESENHISTA: SILVANA	VERIFICAÇÃO: SIDNEY	APROVAÇÃO: IVO



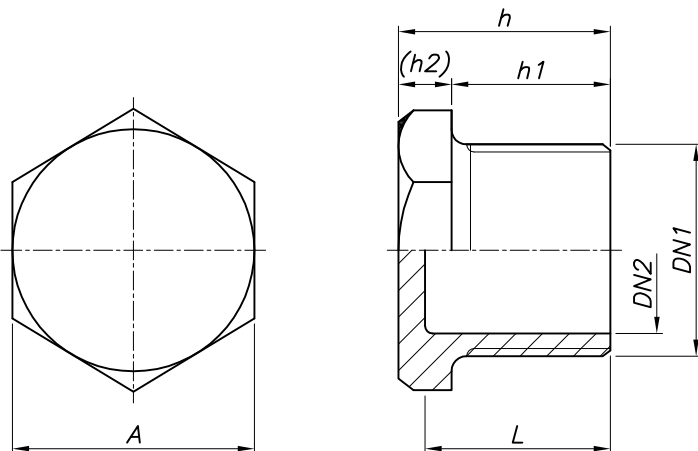
DIÂMETRO NOM. POL. (INCH)	b	DN1	DN2	L1	L2	h	h1	(h2)	l
1/8	7,1	1/8	–	–	–	18,0	9,9	7,9	–
1/4	8,9	1/4	–	–	–	19,1	9,9	8,9	–
3/8	9,9	3/8	–	–	–	20,1	10,9	8,9	–
1/2	13,0	1/2	14,5	11,9	21,1	23,1	13,0	9,9	2,5
3/4	18,0	3/4	18,0	14,5,0	25,9	30,0	18,0	11,9	2,5
1	19,1	1	24,9	18,0	31,0	33,0	21,1	11,9	2,5
1.1/4	23,1	1.1/4	34,0	19,1	36,1	39,1	23,1	16,0	2,5
1.1/2	25,9	1.1/2	39,1	21,1	36,1	39,9	23,1	17,0	2,5
2	29,0	2	50,0	23,1	41,9	45,0	25,9	19,1	2,5
2.1/2	39,9	2.1/2	59,9	23,9	40,9	48,0	27,9	20,1	3,0
3	43,9	3	74,9	26,9	50,0	54,1	32,0	22,1	3,0
4	58,9	4	101,1	33,0	55,1	58,9	37,1	22,1	3,0

OBS: DIMENSÕES CONFORME PADRÃO QG




QG IND. E COM. DE ACESSÓRIOS INDUSTRIAIS LTDA.

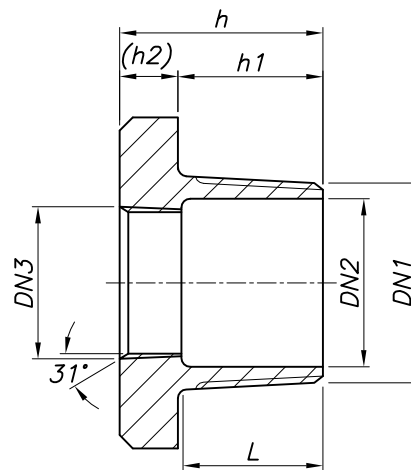
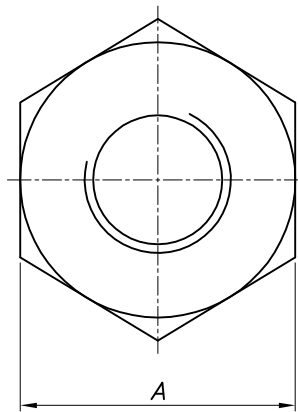
TÍTULO: BUJÃO CABEÇA QUADRADA 150#		CÓDIGO: IT-010	FOLHA: 06	REV.: 03
MATERIAL: AÇO INOX TP 304 (CF8), 316 (CF8M)		NORMA: A351		
ESCALA: S/ESCALA	DATA: 07/06/18	DESENHISTA: SILVANA	VERIFICAÇÃO: SIDNEY	APROVAÇÃO: IVO



DIÂMETRO NOM. POL. (INCH)	DN1	DN2	L	A	h	h1	(h2)
1/8	1/8	-	-	14,0	18,0	10,9	6,1
1/4	1/4	-	-	17,0	23,1	17,0	6,1
3/8	3/8	8,9	20,6	21,1	23,6	17,0	6,6
1/2	1/2	14,5	24,9	25,9	27,9	20,1	7,9
3/4	3/4	18,0	24,9	32,0	27,9	20,1	7,9
1	1	25,9	30,0	38,1	34,0	24,9	8,9
1.1/4	1.1/4	34,0	31,0	46,0	35,1	24,9	9,9
1.1/2	1.1/2	38,6	33,0	52,1	36,1	24,9	10,9
2	2	50,0	34,0	65,0	37,6	25,9	11,4
2.1/2	2.1/2	59,9	35,1	80,0	39,9	27,9	11,9
3	3	74,9	39,1	95,0	45,0	32,0	13,0
4	4	100,1	45,0	119,9	51,1	37,1	14,0


OBS: DIMENSÕES CONFORME PADRÃO QG

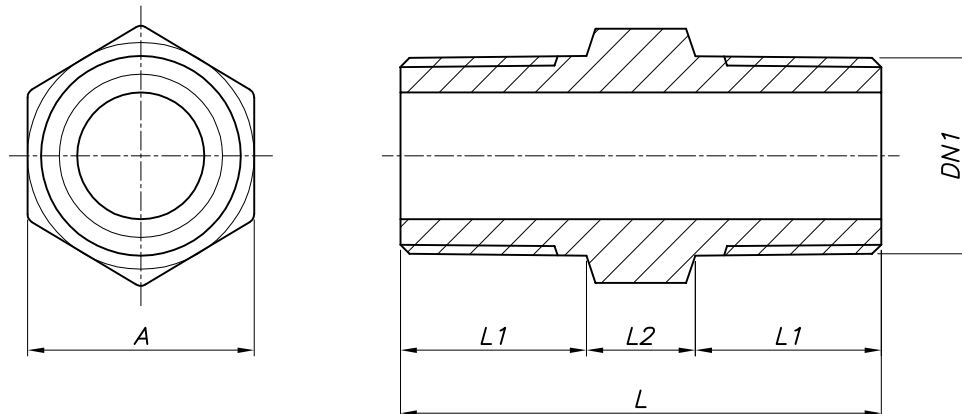
	QG IND. E COM. DE ACESSÓRIOS INDUSTRIAIS LTDA.								
	TÍTULO:	BUJÃO CABEÇA SEXTAVADA 150#	CÓDIGO:	IT-010	FOLHA:	07	REV.:	03	
	MATERIAL:	AÇO INOX TP 304 (CF8), 316 (CF8M)	NORMA:	A351					
	ESCALA:	S/ESCALA	DATA:	07/06/18	DESENHISTA:	SILVANA	VERIFICAÇÃO:	SIDNEY	APROVAÇÃO:



DIÂMETRO NOM. POL. (INCH)	A	L	DN1	DN2	DN3	h	h1	(h2)
3/8 x 1/4	22,1	–	3/8	10,9	1/4	23,1	17,0	6,1
1/2 x 1/4	25,9	17,0	1/2	14,5	1/4	25,4	20,1	5,6
1/2 x 3/8	25,9	–	1/2	14,5	3/8	25,4	20,1	5,6
3/4 x 1/4	32,0	17,5	3/4	18,0	1/4	26,4	20,1	6,6
3/4 x 3/8	32,0	17,5	3/4	18,0	3/8	26,4	20,1	6,6
3/4 x 1/2	32,0	–	3/4	18,0	1/2	26,4	20,1	6,6
1 x 1/4	38,1	24,4	1	25,9	1/4	33,5	25,4	7,9
1 x 3/8	38,1	24,4	1	25,9	3/8	33,5	25,4	7,9
1 x 1/2	38,1	22,1	1	25,9	1/2	33,5	25,4	7,9
1 x 3/4	38,1	20,6	1	25,9	3/4	33,5	25,4	7,9
1.1/4 x 1/2	46,0	23,1	1.1/4	35,1	1/2	34,0	25,9	7,9
1.1/4 x 3/4	46,0	21,1	1.1/4	35,1	3/4	34,0	25,9	7,9
1.1/4 x 1	46,0	19,6	1.1/4	35,1	1	34,0	25,9	7,9
1.1/2 x 3/8	52,1	25,9	1.1/2	39,9	3/8	36,1	25,9	9,9
1.1/2 x 1/2	52,1	23,9	1.1/2	39,9	1/2	36,1	25,9	9,9
1.1/2 x 3/4	52,1	23,1	1.1/2	39,9	3/4	36,1	25,9	9,9
1.1/2 x 1	52,1	21,1	1.1/2	39,9	1	36,1	25,9	9,9
1.1/2 x 1.1/4	52,1	18,5	1.1/2	39,9	1.1/4	36,1	25,9	9,9
2 x 1/2	63,0	24,9	2	51,1	1/2	36,1	25,4	10,4
2 x 3/4	63,0	23,1	2	51,1	3/4	36,1	25,4	10,4
2 x 1	63,0	22,1	2	51,1	1	36,1	25,4	10,4
2 x 1.1/4	63,0	20,1	2	51,1	1.1/4	36,1	25,4	10,4
2 x 1.1/2	63,0	22,1	2	51,1	1.1/2	36,1	25,4	10,4
2.1/2 x 1	80,0	34,5	2.1/2	63,0	1	49,0	37,1	11,9
2.1/2 x 1.1/4	80,0	31,5	2.1/2	63,0	1.1/4	49,0	37,1	11,9
2.1/2 x 1.1/2	80,0	30,0	2.1/2	63,0	1.1/2	49,0	37,1	11,9
2.1/2 x 2	80,0	29,0	2.1/2	63,0	2	49,0	37,1	11,9
3 x 1	95,0	35,1	3	77,0	1	50,0	37,1	13,0
3 x 1.1/4	95,0	32,0	3	77,0	1.1/4	50,0	37,1	13,0
3 x 1.1/2	95,0	31,0	3	77,0	1.1/2	50,0	37,1	13,0
3 x 2	95,0	30,0	3	77,0	2	50,0	37,1	13,0
3 x 2.1/2	95,0	25,9	3	77,0	2.1/2	50,0	37,1	13,0
4 x 2	119,9	31,0	4	101,1	2	51,1	37,1	14,0
4 x 3	119,9	25,9	4	101,1	3	51,1	37,1	14,0

OBS: DIMENSÕES CONFORME PADRÃO QG

	QG IND. E COM. DE ACESSÓRIOS INDUSTRIAIS LTDA.								
	TÍTULO:	BUCHA DE REDUÇÃO SEXTAVADA 150#	CÓDIGO:	IT-010	FOLHA:	08	REV.:	03	
	MATERIAL:	AÇO INOX TP 304 (CF8), 316 (CF8M)	NORMA:	A351					
	ESCALA:	S/ESCALA	DATA:	07/06/18	DESENHISTA:	SILVANA	VERIFICAÇÃO:	SIDNEY	APROVAÇÃO:



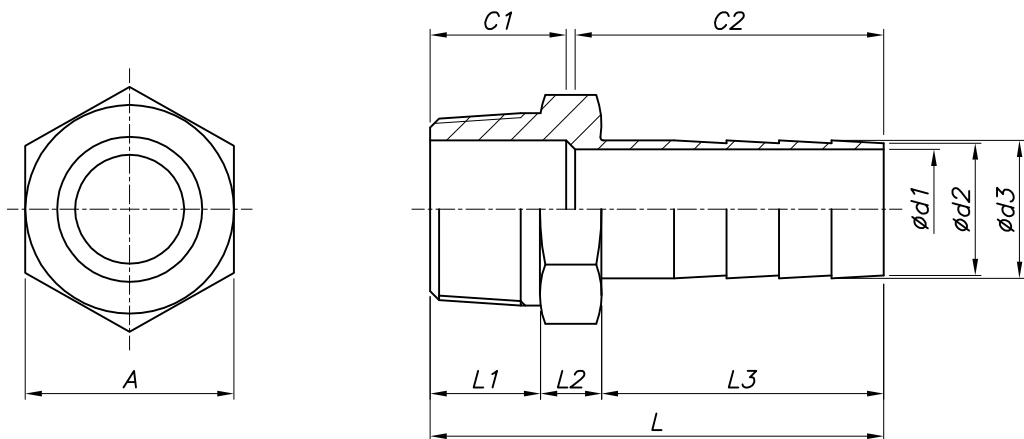
DIÂMETRO NOM. POL. (INCH)	DN1	A	L	L1	L2
1/8	1/8	13,0	31,0	11,9	7,1
1/4	1/4	15,0	33,0	13,0	7,1
3/8	3/8	20,1	33,0	17,0	7,9
1/2	1/2	23,1	41,0	20,1	9,9
3/4	3/4	29,0	44,0	20,1	10,9
1	1	36,1	49,0	25,4	11,9
1.1/4	1.1/4	46,0	52,0	23,6	11,9
1.1/2	1.1/2	51,1	52,0	24,9	14,0
2	2	63,0	58,0	26,9	14,0
2.1/2	2.1/2	80,0	63,0	27,9	17,0
3	3	95,0	69,0	34,0	18,0
4	4	119,9	80,0	36,1	18,0

OBS: DIMENSÕES CONFORME PADRÃO QG



QG IND. E COM. DE ACESSÓRIOS INDUSTRIAIS LTDA.

TÍTULO: NIPLE DUPLO SEXTAVADO 150#		CÓDIGO: IT-010	FOLHA: 09	REV.: 03
MATERIAL: AÇO INOX TP 304 (CF8), 316 (CF8M)		NORMA: A351		
ESCALA: S/ESCALA	DATA: 07/06/18	DESENHISTA: SILVANA	VERIFICAÇÃO: SIDNEY	APROVAÇÃO: IVO



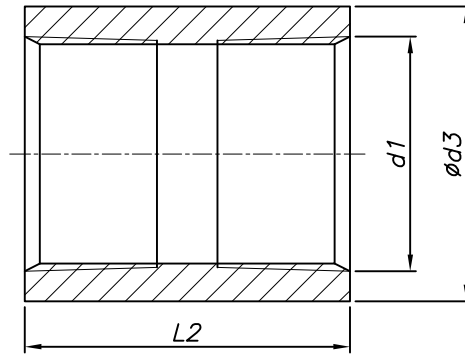
DIÂMETRO NOM. POL. (INCH)	A	DN1	DN2	C	C1	C2	L	L1	L2	(L3)	d1	d2	d3
1/4	16,0	1/4	6,6	4,1	17,0	27,9	46,5	13,0	9,9	23,6	5,1	7,9	8,9
3/8	19,1	3/8	9,4	5,6	18,0	33,0	56,9	13,0	9,9	28,4	6,6	9,9	10,9
1/2	24,9	1/2	14,5	6,6	19,1	40,9	62,5	15,5	9,9	37,1	14,5	13,5	14,5
3/4	31,0	3/4	18,0	8,4	23,1	48,0	72,4	18,0	11,4	42,9	14,5	19,6	20,6
1	38,1	1	25,9	8,9	24,9	55,1	82,0	19,6	12,4	50,0	20,1	25,4	26,7
1.1/4	46,0	1.1/4	35,1	9,4	27,9	48,0	80,0	22,6	12,4	53,1	26,9	32,5	34,0
1.1/2	52,1	1.1/2	39,9	10,4	31,0	57,9	92,5	23,1	13,5	55,9	33,0	38,6	40,4
2	65,0	2	51,6	13,0	33,0	73,9	109,5	24,4	15,0	70,1	45,0	50,5	52,6
2.1/2	80,0	2.1/2	67,1	16,0	37,1	95,0	135,9	26,9	16,0	93,0	52,8	62,0	64,0
3	96,0	3	78,0	17,0	42,9	100,1	147,1	33,0	17,0	97,0	70,1	74,9	78,0
4	119,9	4	102,1	21,1	48,0	104,9	158,0	36,1	18,0	103,9	89,9	101,1	103,9

OBS: DIMENSÕES CONFORME PADRÃO QG

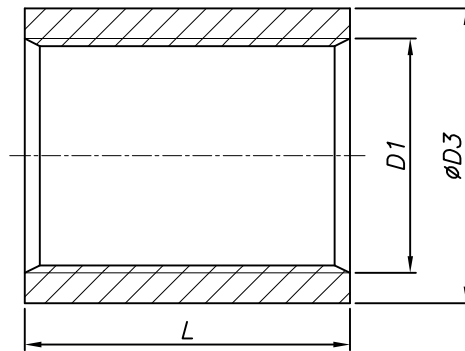


QG IND. E COM. DE ACESSÓRIOS INDUSTRIAIS LTDA.

TÍTULO: ESPIGÃO 150#		CÓDIGO: IT-010	FOLHA: 10	REV.: 03
MATERIAL: AÇO INOX TP 304 (CF8), 316 (CF8M)		NORMA: A351		
ESCALA: S/ESCALA	DATA: 07/06/18	DESENHISTA: SILVANA	VERIFICAÇÃO: SIDNEY	APROVAÇÃO: IVO



NPT



BSP

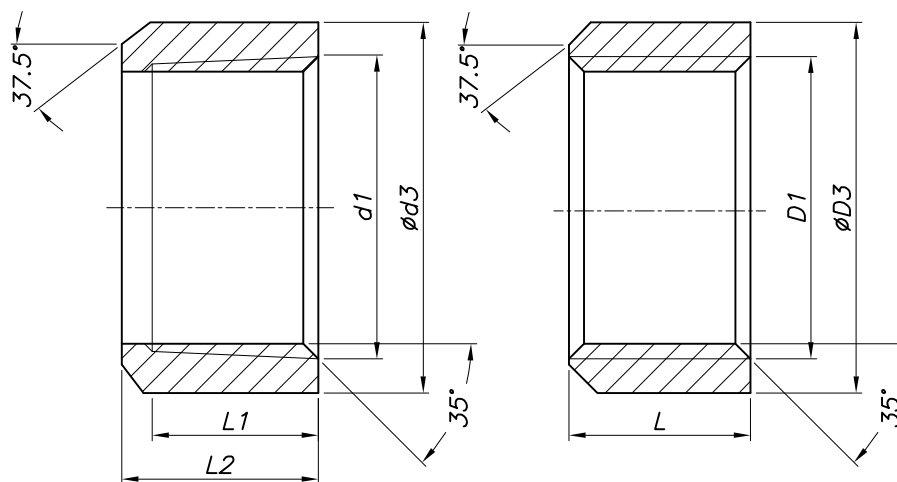
DIÂMETRO NOM. POL. (INCH)	d1	NPT		D1	BSP	
		d3	L2		D3	L
1/8	1/8	14,0	20,1	1/8	14,0	20,1
1/4	1/4	18,5	26,9	1/4	18,5	24,9
3/8	3/8	21,6	27,9	3/8	21,6	25,9
1/2	1/2	26,4	36,1	1/2	26,4	34,0
3/4	3/4	32,0	39,1	3/4	32,0	36,1
1	1	39,6	42,9	1	39,6	42,9
1.1/4	1.1/4	48,5	48,0	1.1/4	48,5	48,0
1.1/2	1.1/2	54,6	48,0	1.1/2	54,6	48,0
2	2	66,5	55,9	2	66,5	55,9
2.1/2	2.1/2	84,1	65,0	2.1/2	84,1	65,0
3	3	100,1	71,1	3	95,0	71,1
4	4	129,0	83,1	4	121,9	83,1
5	5	1161,5,0	89,9	-	-	-
6	6	184,9	100,6	-	-	-

OBS: DIMENSÕES CONFORME PADRÃO QG



QG IND. E COM. DE ACESSÓRIOS INDUSTRIAIS LTDA.

TÍTULO: LUVAS 150#		CÓDIGO: IT-010	FOLHA: 11	REV.: 03
MATERIAL: AÇO INOX TP 304 (CF8), 316 (CF8M)		NORMA: A351		
ESCALA: S/ESCALA	DATA: 07/06/18	DESENHISTA: SILVANA	VERIFICAÇÃO: SIDNEY	APROVAÇÃO: IVO



NPT

BSP

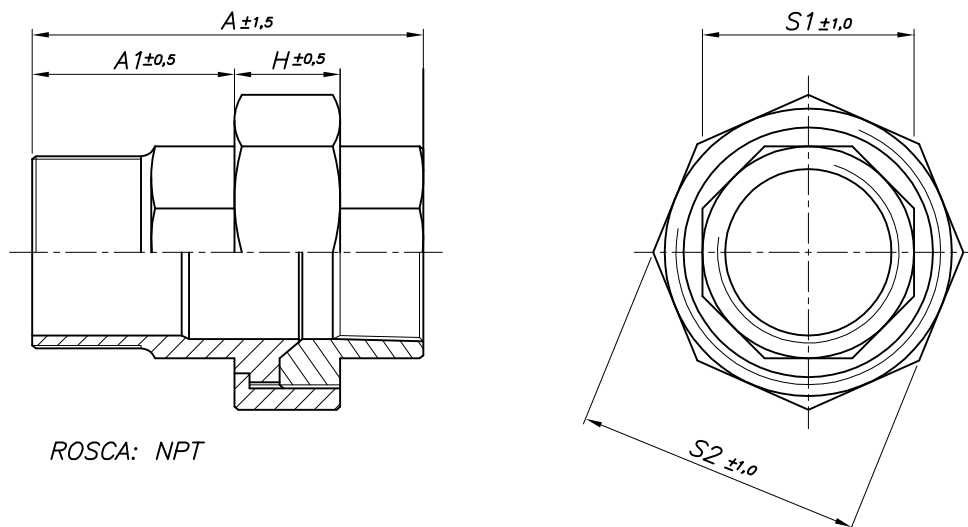
DIÂMETRO NOM. POL. (INCH)	d1	NPT		D1	BSP	
		d3	L2		D3	L
1/8	1/8	14,2	10,9	1/8	14,0	10,9
1/4	1/4	18,5	13,0	1/4	18,5	10,9
3/8	3/8	21,6	14,0	3/8	21,6	11,9
1/2	1/2	26,4	18,0	1/2	26,4	15,0
3/4	3/4	32,0	20,1	3/4	32,0	17,0
1	1	39,6	21,1	1	39,6	19,1
1.1/4	1.1/4	48,5	23,9	1.1/4	48,5	22,1
1.1/2	1.1/2	54,6	23,9	1.1/2	54,6	22,1
2	2	66,5	27,9	2	66,5	25,9
2.1/2	2.1/2	84,1	33,0	2.1/2	82,0	30,0
3	3	100,1	36,1	3	95,0	33,0
4	4	129,0	41,9	4	121,9	39,9

OBS: DIMENSÕES CONFORME PADRÃO QG



QG IND. E COM. DE ACESSÓRIOS INDUSTRIAIS LTDA.

TÍTULO:		MEIA LUVA 150#		CÓDIGO:	FOLHA:	REV.:
				IT-010	12	03
MATERIAL:			NORMA:			
AÇO INOX TP 304 (CF8), 316 (CF8M)			A351			
ESCALA:	DATA:	DESENHISTA:	VERIFICAÇÃO:	APROVAÇÃO:		
S/ESCALA	07/06/18	SILVANA	SIDNEY	IVO		



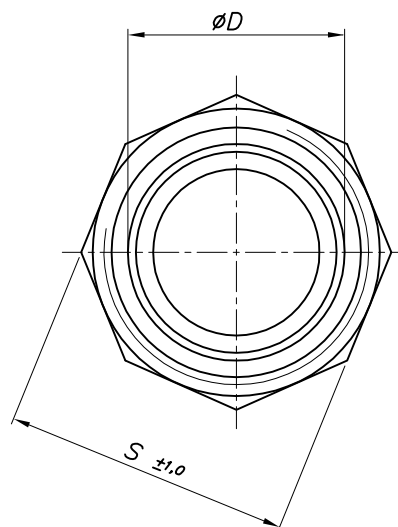
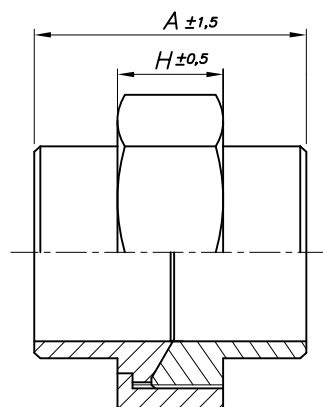
DIÂMETRO NOM. POL. (INCH)	A	A1	H	S1	S2
1/8	52,1	26,9	15,0	18,0	29,0
1/4	53,1	26,9	15,0	18,0	29,0
3/8	56,9	31,0	15,0	23,1	36,1
1/2	62,0	34,0	15,0	26,9	40,9
3/4	66,0	34,0	16,0	32,0	49,0
1	71,9	39,1	18,0	40,9	57,9
1.1/4	78,0	41,9	21,1	50,0	68,1
1.1/2	81,0	42,9	22,1	55,9	77,0
2	87,9	47,0	24,9	69,1	91,9
2.1/2	100,1	51,1	24,9	85,1	109,0
3	119,1	62,0	29,0	99,1	125,0
4	132,1	67,1	34,0	125,0	156,0

OBS: DIMENSÕES CONFORME PADRÃO QG



QG IND. E COM. DE ACESSÓRIOS INDUSTRIAIS LTDA.

TÍTULO:		UNIAO MF 150#		CÓDIGO:	FOLHA:	REV.:
				IT-010	13	01
MATERIAL:			NORMA:			
AÇO INOX TP 304 (CF8), 316 (CF8M)			A351			
ESCALA:	DATA:	DESENHISTA:	VERIFICAÇÃO:	APROVAÇÃO:		
S/ESCALA	07/06/18	SILVANA	SIDNEY	IVO		



ROSCA: NPT

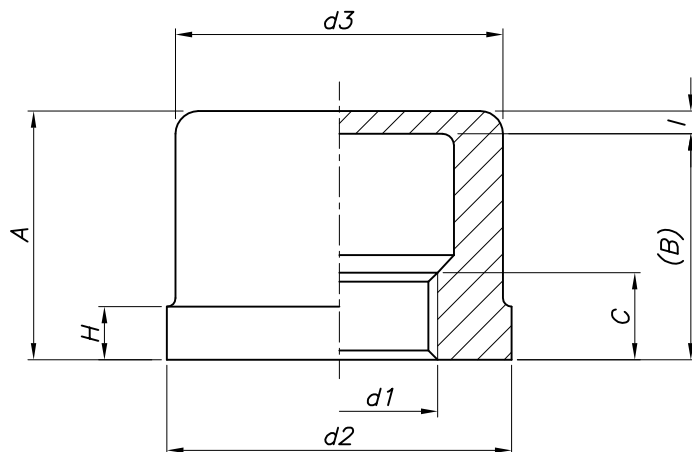
DIÂMETRO NOM. POL. (INCH)	A	D	H	S
1/4	32,0	13,7	14,0	29,0
3/8	38,1	17,3	14,0	36,1
1/2	39,9	21,6	14,0	40,9
3/4	47,0	27,2	14,0	49,0
1	49,5	34,0	18,0	65,5
1.1/4	54,1	42,9	19,1	67,8
1.1/2	56,9	48,5	21,1	76,7
2	59,9	60,7	23,9	91,4
2.1/2	70,1	76,2	23,9	109,0
3	81,0	89,2	27,9	125,0

OBS: DIMENSÕES CONFORME PADRÃO QG



QG IND. E COM. DE ACESSÓRIOS INDUSTRIAIS LTDA.

TÍTULO: UNIAO BW 150#		CÓDIGO: IT-010	FOLHA: 14	REV.: 01
MATERIAL: AÇO INOX TP 304 (CF8), 316 (CF8M)		NORMA: A351		
ESCALA: S/ESCALA	DATA: 07/06/18	DESENHISTA: SILVANA	VERIFICAÇÃO: SIDNEY	APROVAÇÃO: IVO



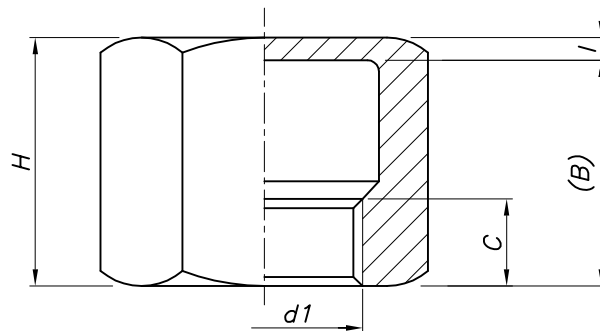
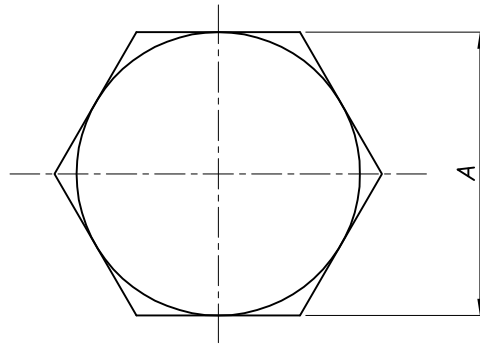
DIÂMETRO NOM. POL. (INCH)	d1	d2	d3	A	(B)	C	H	l
1/8	1/8	16,0	13,5	15,0	11,9	6,1	6,6	3,0
1/4	1/4	20,1	18,0	22,1	19,1	9,4	6,6	3,0
3/8	3/8	25,4	23,6	24,4	22,1	9,7	7,6	2,5
1/2	1/2	30,0	27,9	27,9	24,9	9,9	7,6	3,0
3/4	3/4	36,1	33,0	27,9	24,9	9,9	8,4	3,0
1	1	44,5	41,4	32,0	29,0	14,0	8,9	3,0
1.1/4	1.1/4	53,1	50,0	32,5	28,4	16,5	10,9	4,1
1.1/2	1.1/2	59,9	56,9	36,1	31,0	16,5	10,9	5,1
2	2	73,9	70,1	39,1	34,0	18,0	11,9	5,1
2.1/2	2.1/2"	90,9	86,1	42,9	39,1	22,1	14,0	6,1
3	3	110,0	103,9	47,5	41,4	23,1	14,0	6,1
4	4	138,9	133,1	52,1	45,0	25,9	15,0	6,1

OBS: DIMENSÕES CONFORME PADRÃO QG



QG IND. E COM. DE ACESSÓRIOS INDUSTRIAIS LTDA.

TÍTULO: CAP REDONDO 150#		CÓDIGO: IT-010	FOLHA: 15	REV.: 01
MATERIAL: AÇO INOX TP 304 (CF8), 316 (CF8M)		NORMA: A351		
ESCALA: S/ESCALA	DATA: 07/06/18	DESENHISTA: SILVANA	VERIFICAÇÃO: SIDNEY	APROVAÇÃO: IVO



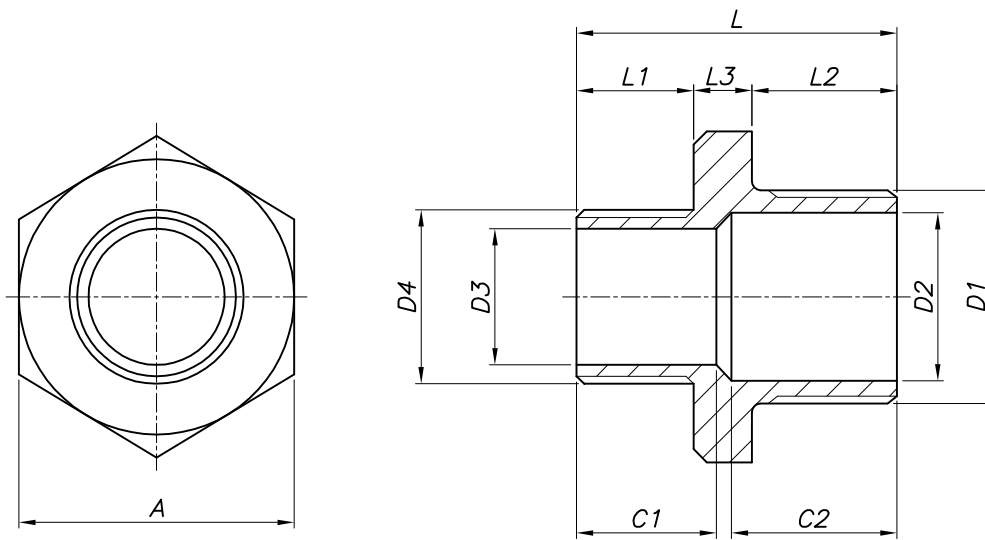
DIÂMETRO NOM. POL. (INCH)	d1	A	(B)	C	H	I
1/8	1/8	16,0	13,0	6,1	16,0	3,0
1/4	1/4	18,0	17,0	9,4	20,1	3,0
3/8	3/8	20,1	18,0	9,7	21,1	3,0
1/2	1/2	25,9	19,6	9,9	22,6	3,0
3/4	3/4	32,0	20,1	9,9	23,1	3,0
1	1	39,1	23,1	13,5	25,9	3,0
1.1/4	1.1/4	49,0	24,4	16,0	28,4	4,1
1.1/2	1.1/2	55,1	27,9	17,0	32,0	4,1
2	2	66,0	32,0	23,1	35,1	3,0
2.1/2	2.1/2"	85,1	36,1	23,1	41,9	6,1
3	3	100,1	40,9	24,9	45,5	6,1
4	4	125,0	49,0	25,9	55,1	6,1

OBS: DIMENSÕES CONFORME PADRÃO QG



QG IND. E COM. DE ACESSÓRIOS INDUSTRIAIS LTDA.

TÍTULO: CAP SEXTAVADO 150#		CÓDIGO: IT-010	FOLHA: 16	REV.: 01
MATERIAL: AÇO INOX TP 304 (CF8), 316 (CF8M)		NORMA: A351		
ESCALA: S/ESCALA	DATA: 07/06/18	DESENHISTA: SILVANA	VERIFICAÇÃO: SIDNEY	APROVAÇÃO: IVO



DIÂMETRO NOM. POL. (INCH)	A	D1	D2	D3	D4	C1	C2	L	L1	L2	L3
3/8 x 1/4	22,1	3/8	10,4	8,4	1/4	14,0	20,1	35,1	11,9	13,0	10,2
1/2 x 1/4	25,9	1/2	14,5	8,4	1/4	11,9	22,1	39,1	11,9	17,0	10,2
1/2 x 3/8	25,9	1/2	14,5	10,4	3/8	15,0	22,1	39,1	13,0	16,0	10,1
3/4 x 1/4	32,0	3/4	20,1	8,4	1/4	15,0	25,9	41,9	11,9	19,1	11,0
3/4 x 3/8	32,0	3/4	20,1	10,4	3/8	11,9	24,9	41,9	11,9	19,1	11,0
3/4 x 1/2	32,0	3/4	20,1	14,5	1/2	17,0	24,9	45,0	15,0	19,1	11,0
1 x 1/4	38,1	1	25,4	8,4	1/4	15,0	27,9	45,5	13,5	20,1	11,9
1 x 3/8	38,1	1	25,4	10,4	3/8	15,0	27,9	45,0	13,0	20,1	11,9
1 x 1/2	38,1	1	25,4	14,5	1/2	18,0	27,9	48,0	16,0	20,1	11,9
1 x 3/4	38,1	1	25,4	20,1	3/4	20,1	29,0	51,1	19,1	20,1	11,9
1.1/4 x 1/2	46,0	1.1/4	34,0	14,5	1/2	18,0	30,0	51,1	14,0	22,1	15,0
1.1/4 x 3/4	46,0	1.1/4	34,0	20,1	3/4	19,1	32,0	55,1	19,1	23,9	12,1
1.1/4 x 1	46,0	1.1/4	34,0	25,4	1	22,1	29,0	54,1	20,1	22,1	11,9
1.1/2 x 3/8	54,1	1.1/2	39,1	10,4	3/8	15,0	31,0	48,0	12,4	22,6	13,0
1.1/2 x 1/2	54,1	1.1/2	39,1	14,5	1/2	17,0	32,0	50,0	14,5	22,6	12,9
1.1/2 x 3/4	54,1	1.1/2	39,1	20,1	3/4	21,1	31,0	53,1	17,5	22,6	13,0
1.1/2 x 1	54,1	1.1/2	39,1	25,4	1	23,9	29,0	54,1	19,6	21,6	12,9
1.1/2 x 1.1/4	54,1	1.1/2	39,1	34,0	1.1/4	24,9	29,0	57,9	22,6	22,6	12,7
2 x 1/2	63,0	2	51,1	14,5	1/2	18,0	37,1	57,9	17,0	24,9	16,0
2 x 3/4	63,0	2	51,1	20,1	3/4	18,0	36,1	59,9	18,0	25,9	16,0
2 x 1	63,0	2	51,1	25,4	1	22,1	36,1	62,0	20,1	25,9	16,0
2 x 1.1/4	63,0	2	51,1	34,0	1.1/4	23,1	37,1	63,0	21,1	25,9	16,0
2 x 1.1/2	63,0	2	51,1	39,1	1.1/2	24,9	37,1	65,0	23,1	25,9	16,0
2.1/2 x 1	80,0	2.1/2	64,0	25,4	1	23,9	38,1	65,0	20,1	29,0	15,9
2.1/2 x 1.1/4	80,0	2.1/2	64,0	34,0	1.1/4	25,9	37,1	67,1	22,1	29,0	16,0
2.1/2 x 1.1/2	80,0	2.1/2	64,0	39,1	1.1/2	26,9	38,1	68,1	23,1	29,0	16,0
2.1/2 x 2	80,0	2.1/2	64,0	51,1	2	27,9	37,1	69,1	24,9	27,9	16,3
3 x 1	95,0	3	75,9	25,4	1	23,9	42,9	70,1	20,1	33,0	17,0
3 x 1.1/4	95,0	3	75,9	34,0	1.1/4	25,9	42,9	71,9	22,1	33,0	16,8
3 x 1.1/2	95,0	3	75,9	39,1	1.1/2	26,9	42,9	72,9	23,1	33,0	16,8
3 x 2	95,0	3	75,9	51,1	2	29,0	42,9	74,9	24,9	33,0	17,0
3 x 2.1/2	95,0	3	75,9	64,0	2.1/2	31,0	42,9	77,0	26,9	33,0	17,1
4 x 2	119,9	4	102,1	51,1	2	29,0	48,0	80,0	24,9	38,1	17,0
4 x 3	119,9	4	102,1	77,0	3	31,0	48,0	87,1	32,0	38,1	17,0

OBS: DIMENSÕES CONFORME PADRÃO QG

	QG IND. E COM. DE ACESSÓRIOS INDUSTRIAIS LTDA.								
	TÍTULO:	NIPLE SEXTAVADO DE REDUÇÃO 150#	CÓDIGO:	IT-010	FOLHA:	17	REV.:	01	
	MATERIAL:	AÇO INOX TP 304 (CF8), 316 (CF8M)		NORMA:	A351				
	ESCALA:	S/ESCALA	DATA:	07/06/18	DESENHISTA:	SILVANA	VERIFICAÇÃO:	SIDNEY	APROVAÇÃO: